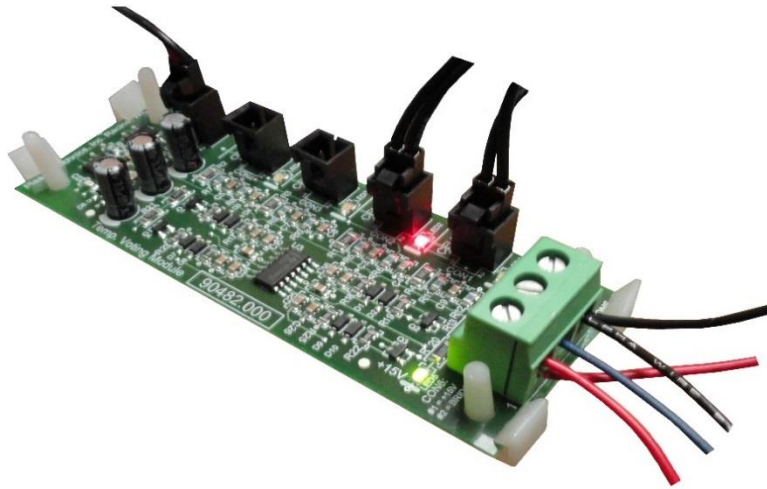




Temperature Sensor Board



Description:

The Temperature Sensor Board is a small circuit used to select and output the highest temperature reading among a set of temperature sensors.

Intended for thermally similar situations. Up to four (4) temperature sensors per temperature board. Output terminal connects to a DAT inverter's temperature sensor.

Size:

Same size as Fan Control Board. 3.75" x 1.5".

Capabilities:

- Determine highest temperature among set of sensors (up to 4).
- Send highest temperature to DAT210/310 for PLC reading or PlasmaVIEW display.
- Prevent temperature run away situation.
- Daisy chaining for additional sensor sets.
- Green LED: display 15v supply connected.
- Red LED: display highest temperature input.

Daisy Chaining:

Temperature sensor boards can be chained together to add additional sets of sensors. Wire each pin of the 3-pin connector from one board to the respective pins of the other board (see diagram below). Only one of the sensor boards require the temperature output terminal to connect to a DAT210/310 temperature sensor terminal.

Connection Diagram

